



# Dock Leveller Embedded Type with Hinged Lip RH11

Hydraulic recessed loading leveller, with 400 mm hinged lip.

## TECHNICAL DESCRIPTION

The **RH11** Dock Leveller can bridge the distance and height between the loading bay and the body of the lorry, using its hydraulic tilting mechanism and hinged lip. Its **400mm hinged hydraulic lip** is long enough to allow the dock leveller's platform to rest firmly on the lorry's trailer. This type of **recessed** loading leveller can support loads of up to **15,000 kg**, with a maximum working gradient of 12.5%.



RH11 Dock Leveller with hinged lip.

## DOCK LEVELLER DIMENSIONS

There are 4 standard sizes for the RH11 Dock Leveller, with different widths for the hinged lip. We also design and manufacture RH11 Dock Levellers that are up to **5000mm long x 2400 wide x 800 high\***.

- ✓ L 2060 x (W 1800/2000/2200) x H 600mm
- ✓ L 2560 x (W 1800/2000/2200) x H 600mm
- ✓ L 2300 x (W 1800/2000/2200) x H 600mm
- ✓ L 3060 x (W 1800/2000/2200) x H 600mm

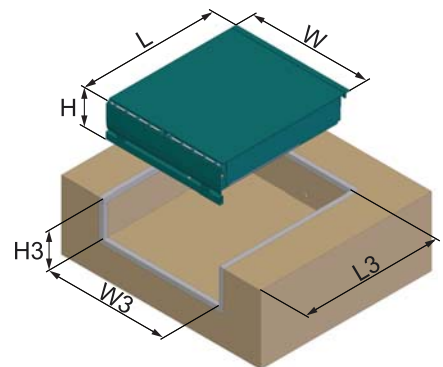
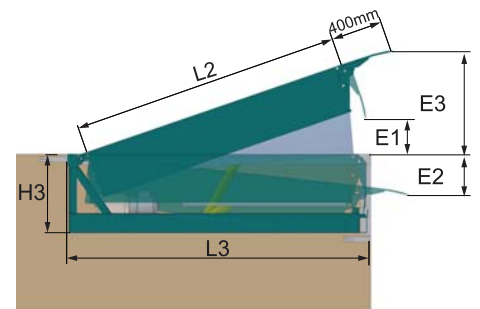
\*For other dimensions, please consult Customer Service.

## DOCK LEVELLER SIDE VIEW



- 1 Self-cleaning reinforced flat hinges.
- 2 Hydraulic equipment: electric motor, hydraulic pump and tank.
- 3 Axles protected from corrosion by electrolytic zinc plating treatment and passivation.
- 4 Centring system between lip and dock uses nylon separators to keep the claw in the correct position.
- 5 Toeguards for feet protection and black & yellow safety bands.
- 6 Lifting cylinders with Ø50mm piston rod and anti-fall safety valve.

## PIT DIMENSIONS



	LIP	L2	W	H	L	L3	W3	H3	E1	E2	E3
2060	400	1900	1800	600	2060	2080	1840	610	220	310	740
			2000				2040				
			2200				2240				
2300	400	2140	1800	600	2300	2320	1840	610	270	305	785
			2000				2040				
			2200				2240				
2560	400	2400	1800	600	2560	2580	1840	610	260	300	770
			2000				2040				
			2200				2240				
3060	400	2900	1800	600	3060	3080	1840	610	330	290	900
			2000				2040				
			2200				2240				

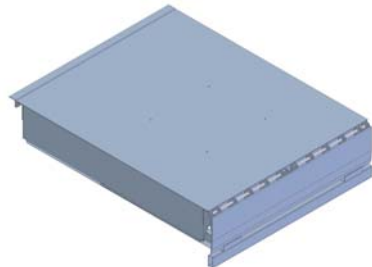
## COMPONENTS

The **Inkema RH11 Dock Leveller** is composed by three parts:

- The **platform** consists of a 6/8mm thick tear plate top, rolled steel sections and lateral toeguards.
- Compact and robust **lip** made of 13/15 mm thick steel tear plate. The lip is hinged and its end is milled, allowing it to fit against the lorry perfectly and smoothing the lorry's passage.
- The **lower structure** is made from rolled steel sections and the platform and hydraulic group are installed on it.



Dock Levellers



### HYDRAULIC EQUIPMENT AND CONTROL PANEL

The hydraulic unit consists of: 1.0 HP 0.75kw 230/400 V **electric motor**, **hydraulic pump** with a flow rate of 5 l/m and **5 litre tank** with oil level sight glass, **safety solenoid valve**, **lifting cylinder** with 50mm piston rod, **lip cylinder** with 30mm piston rod and **hydraulic hoses**.

The **control panel** consists of: transformer for a 24V AC control circuit, switch, connection strip, protective fuses, motor protection switch, contactor and starter pilot.



Inkema Panel



RH11 powerpack

### SAFETY ITEMS

The RH11 Dock Leveller has the following safety features:

- **Emergency stop:** Activated by switch or power failure.
- **Fixed and movable toeguards:** Prevent feet from being trapped between the platform and the pit.
- **Side bands:** Help reduce the risk of collisions.
- **Safety bar:** Prevents it from closing during maintenance.
- **Anti-fall safety valves** inside the hydraulic cylinder.
- Platform with **anti-slip tear surface on top**.



Toeguard for feet protection.



Extended hinged hydraulic lip



Lifting cylinder with anti-fall valve



RH11 suitable for any industrial sector

### FINISHES



#### Painted:

Highly resistant to corrosion and environmental agents. Standard colour grey RAL 7016, any other colour can be chosen according to RAL chart.



#### Galvanised:

Excellent resistance to corrosion and environmental agents.



#### Stainless:

Excellent resistance to aggressive environments such as water or salt. The most resistant option for any aggressive atmosphere.

### STANDARDS

Inkema declares that the RH11 Dock Leveller conforms to the following European directives:

**2006/42/CE, 2014/35/UE, 2014/30/UE and UE 305/2011**

Designed and manufactured in accordance with the following harmonised technical standards:

**UNE-EN 1398 and UNE-EN ISO 12100**

Complies with the following technical standards:

**UNE-EN 349, UNE-EN ISO 13857, UNE-EN ISO 4413, UNE-EN 60204-1, UNE-EN 61000-6-2, UNE-EN 61000-6-3 and UNE-EN 61000-6-4**