



Dock Leveller Suspended Type with Hinged Lip

RH12

Hydraulic Suspended loading leveller, with 400 mm hinged lip.

TECHNICAL DESCRIPTION

The **RH12 Dock Leveller** can bridge the distance and height between the loading bays and the body of the lorry, using its hydraulic tilting mechanism and hinged lip.

Its **400mm hinged hydraulic lip** is long enough to allow the leveller's platform to rest firmly on the lorry's trailer.

This type of **suspended** loading leveller can support loads of up to **15,000 kg**, with a maximum working gradient of 12.5%.



RH12 dock leveller with hinged lip.

DOCK LEVELLER DIMENSIONS

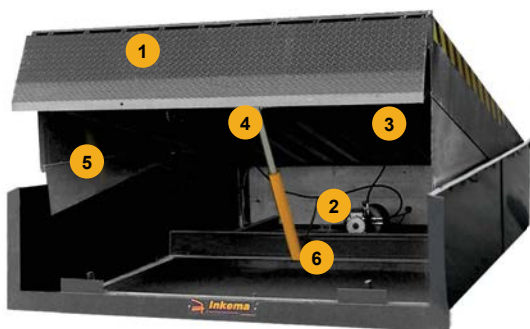
There are 4 standard sizes for the RH12 Dock Leveller, with different widths for the hinged lip. We also design and manufacture RH12 dock levellers that are up to **5000mm long x 2400 wide x 800 high***.

✓ L 2060 x (W 1800/2000/2200) x H 600mm ✓ L 2560 x (W 1800/2000/2200) x H 600mm

✓ L 2300 x (W 1800/2000/2200) x H 600mm ✓ L 3060 x (W 1800/2000/2200) x H 600mm

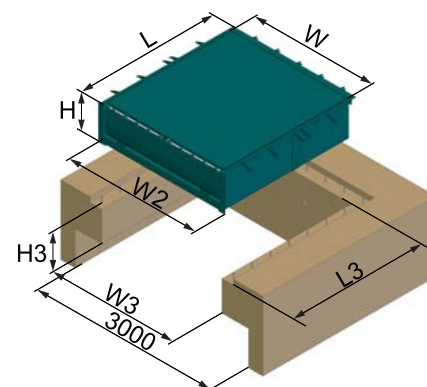
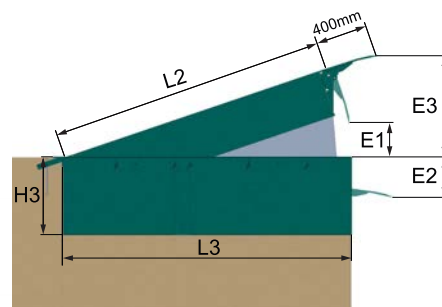
**For other dimensions, please consult Customer Service.*

DOCK LEVELLER SIDE VIEW



- 1 Self-cleaning reinforced flat hinges.
- 2 Hydraulic equipment: electric motor, hydraulic pump and tank.
- 3 Axles protected from corrosion by electrolytic zinc plating treatment and passivation.
- 4 Centring system between lip and dock uses nylon separators to keep the claw in the correct position.
- 5 Toeguards for feet protection and black & yellow safety bands.
- 6 Lifting cylinders with Ø50mm piston rod and anti-fall safety valve.

PIT DIMENSIONS



	LIP	L2	W	L	W2	H	L3	W3	H3	E1	E2	E3
2060	400	1900	1800	2070	1990	605	2000	1880	610	220	310	740
			2000		2190			2080				
			2200		2390			2280				
2300	400	2140	1800	2310	1990	605	2240	1880	610	270	305	785
			2000		2190			2080				
			2200		2390			2280				
2560	400	2400	1800	2570	1990	605	2500	1880	610	260	300	770
			2000		2190			2080				
			2200		2390			2280				
3060	400	2900	1800	3070	1990	605	3000	1880	610	400	290	900
			2000		2190			2080				
			2200		2390			2280				

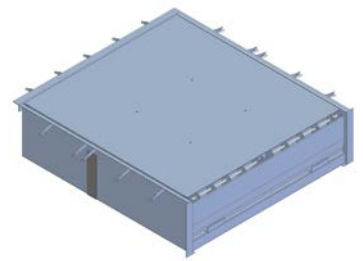
COMPONENTS

The **Inkema RH12 Dock Leveller** is composed by three parts:

- The **platform** consists of a 6/8mm thick tear plate top, rolled steel sections and lateral toeguards.
- Compact and robust **lip** made of 13/15 mm thick steel tear plate. The lip is hinged and its end is milled, allowing it to fit against the lorry perfectly and smoothing the lorry's passage.
- The **lower structure** is made from rolled steel sections and the platform and hydraulic group are installed on it.



Dock Levellers



HYDRAULIC EQUIPMENT AND CONTROL PANEL

The hydraulic unit consists of: 1.0 HP 0.75kw 230/400 V **electric motor**, **hydraulic pump** with a flow rate of 5 l/m and **5 litre tank** with oil level sight glass, **safety solenoid valve**, **lifting cylinder** with 50mm piston rod, **lip cylinder** with 30mm piston rod and **hydraulic hoses**.

The **control panel** consists of: transformer for a 24V AC control circuit, switch, connection strip, protective fuses, motor protection switch, contactor and starter pilot.



Inkema Panel



RH12 powerpack

SAFETY ITEMS

The RH12 Dock Leveller has the following safety features:

- **Emergency stop:** Activated by switch or a power failure.
- **Fixed and movable toeguards:** Prevent feet from being trapped between the platform and the pit.
- **Side bands:** Help reduce the risk of collisions.
- **Safety bar:** Prevents it from closing during maintenance.
- **Anti-fall safety valves** inside the hydraulic cylinder.
- Platform with **anti-slip tear surface on top**.



Side skirt for feet protection.



Extended hinged hydraulic lip



Cover for RH12 dock leveller (optional)



Painted lip with safety bands (optional)

FINISHES



Painted:

Highly resistant to corrosion and environmental agents. Standard colour grey RAL 7016, any other colour can be chosen according to RAL chart.



Galvanised:

Excellent resistance to corrosion and environmental agents.



Stainless:

Excellent resistance to aggressive environments such as water or salt. The most resistant option for any aggressive atmosphere.

STANDARDS

Inkema declares that the RH11 Dock Leveller conforms to the following European directives:

2006/42/CE, 2014/35/UE, 2014/30/UE and UE 305/2011

Designed and manufactured in accordance with the following harmonised technical standards:

UNE-EN 1398 and UNE-EN ISO 12100

Complies with the following technical standards:

UNE-EN 349, UNE-EN ISO 13857, UNE-EN ISO 4413, UNE-EN 60204-1, UNE-EN 61000-6-2, UNE-EN 61000-6-3 and UNE-EN 61000-6-4