



Dock Leveller Suspended Type with Telescopic Lip

RH22
RH32

Hydraulic free-standing dock leveller, with 500 mm (RH22) or 1000 mm (RH32) telescopic lip.

TECHNICAL DESCRIPTION

The RH22/RH32 Dock Leveller can bridge the distance and height between the loading bay and the body of the lorry, using its hydraulic tilting mechanism and retractable lip. Its **500mm or 1000 mm telescopic hydraulic lip** is long enough to allow the dock leveller's platform to rest firmly on the lorry's trailer.

This type of dock leveller is especially suitable for facilities where **thermal insulation**, both internal and external, is **very important**.



RH32 dock leveller with the 1000mm

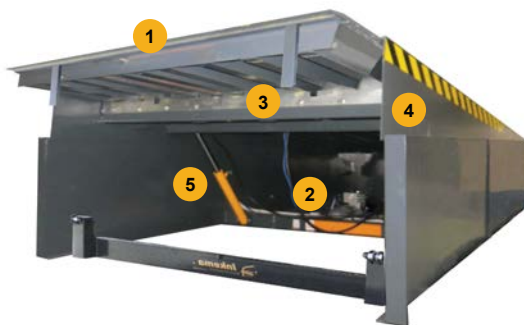
DOCK LEVELLER DIMENSIONS

There are 4 standard sizes for the RH22/RH32 Dock Leveller, with different widths for the telescopic lip. We also design and manufacture dock levellers that are up to **4500mm long x 2400 wide x 900 high***.

- ✓ L2560 x (W1800/2000/2200) x H 600mm
- ✓ L2060 x (W1800/2000/2200) x H 600mm
- ✓ L3060 x (W1800/2000/2200) x H 800mm (For RH22 dock levellers only)
- ✓ L3560 x (W1800/2000/2200) x H 800mm

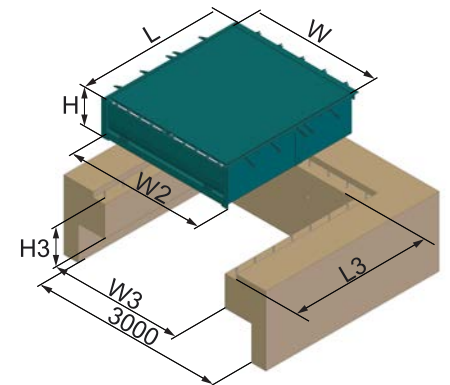
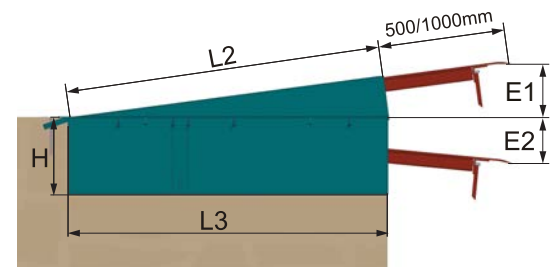
*For other dimensions, please consult Customer Service.

DOCK LEVELLER SIDE VIEW



- 1 Telescopic lip (500-1000mm) designed to fit perfectly against the lorry.
- 2 Hydraulic equipment: electric motor, hydraulic pump and tank.
- 3 Grooved comb system on the front of the machine. Reduces structural stress and increases the life of the dock leveller.
- 4 Toeguards for feet protection and black & yellow safety bands.
- 5 Lifting cylinders with Ø50mm piston rod and anti-fall safety valve.

PIT DIMENSIONS



RH2

	LIP	L2	W	L	W2	H	L3	W3	H3	E1	E2
2060	500	1970	1800	2070	1990	605	2000	1840	610	310	310
2560		2470	2000	2570	2190	805	2500	2040	810	340	310
3060		2970	2200	3070	2390	805	3000	2240	810	440	390
3560		3470	2200	3570	2390	805	3500	2240	810	480	380

RH3

	LIP	L2	W	L	W2	H	L3	W3	H3	E1	E2
2560	1000	2470	1800	2570	1990	605	2500	1840	610	410	365
3060		2970	2000	3070	2190	805	3000	2040	810	510	460
3560		3470	2200	3570	2390	805	3500	2240	810	550	390

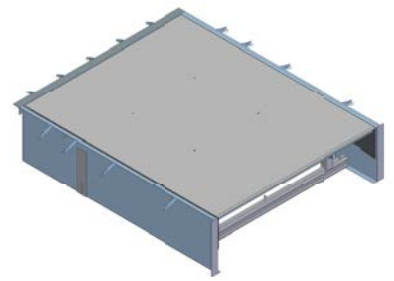


Dock Levellers

COMPONENTS

The Inkema RH21/RH31 Dock Leveller is composed by three parts:

- The **platform** has a 8/10 mm tear plate top, rolled steel sections and lateral toeguards .
- Compact and robust **lip** made of 13/15 mm thick steel tear plate. The lip is hinged and its end is milled, allowing it to fit against the lorry perfectly and smoothing the lorry's passage.
- The **lower structure** is made from rolled steel sections and the platform and hydraulic group are installed on it.



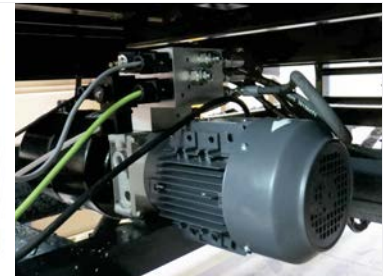
HYDRAULIC EQUIPMENT AND CONTROL PANEL

The hydraulic unit consists of: 1.5 HP 1kw 230/400 V **electric motor**, **hydraulic pump** with a flow rate of 5 l/m and **7 litre tank** with oil level sight glass, safety solenoid valve, **lifting cylinder** with 50mm piston rod, **lip cylinder** with 40mm cylinder liner and **hydraulic hoses**.

The **control panel** consists of: transformer for a 24V AC control circuit, switch, connection strip, protective fuses, motor protection switch, contactor and a starter pilot.



Inkema Panel

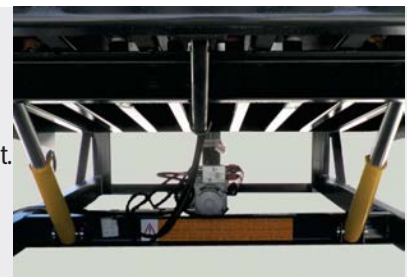


RH22-RH32 powerpack

SAFETY ITEMS

The RH22/RH32 dock leveller has the following safety features:

- **Emergency stop:** Activated by switch or power failure.
- **Fixed and movable toeguards:** Prevent feet from being trapped between the platform and the pit.
- **Side bands:** Help reduce the risk of collisions.
- **Safety bar:** Prevents it from closing during maintenance.
- **Anti-fall safety valves** inside the hydraulic cylinder.
- Platform with **anti-slip tear surface on top**.



Lifting cylinders with anti-fall



Pit model for suspended levellers



Anti-slip tear surface on top



Layout of a facility with RH22/RH32 Dock Leveller

FINISHES



Painted:

Highly resistant to corrosion and environmental agents. Standard colour grey RAL 7016, any other colour can be chosen according to RAL chart.



Galvanised:

Excellent resistance to corrosion and environmental agents.

STANDARDS

Inkema declares that the RH22/RH32 Dock Leveller conforms to the following European directives:

2006/42/CE, 2014/35/UE, 2014/30/UE and UE 305/2011

Designed and manufactured in accordance with the following harmonised technical standards:

UNE-EN 1398 and UNE-EN ISO 12100

Complies with the following technical standards:

UNE-EN 349, UNE-EN ISO 13857, UNE-EN ISO 4413, UNE-EN 60204-1, UNE-EN 61000-6-2, UNE-EN 61000-6-3 and UNE-EN 61000-6-4