



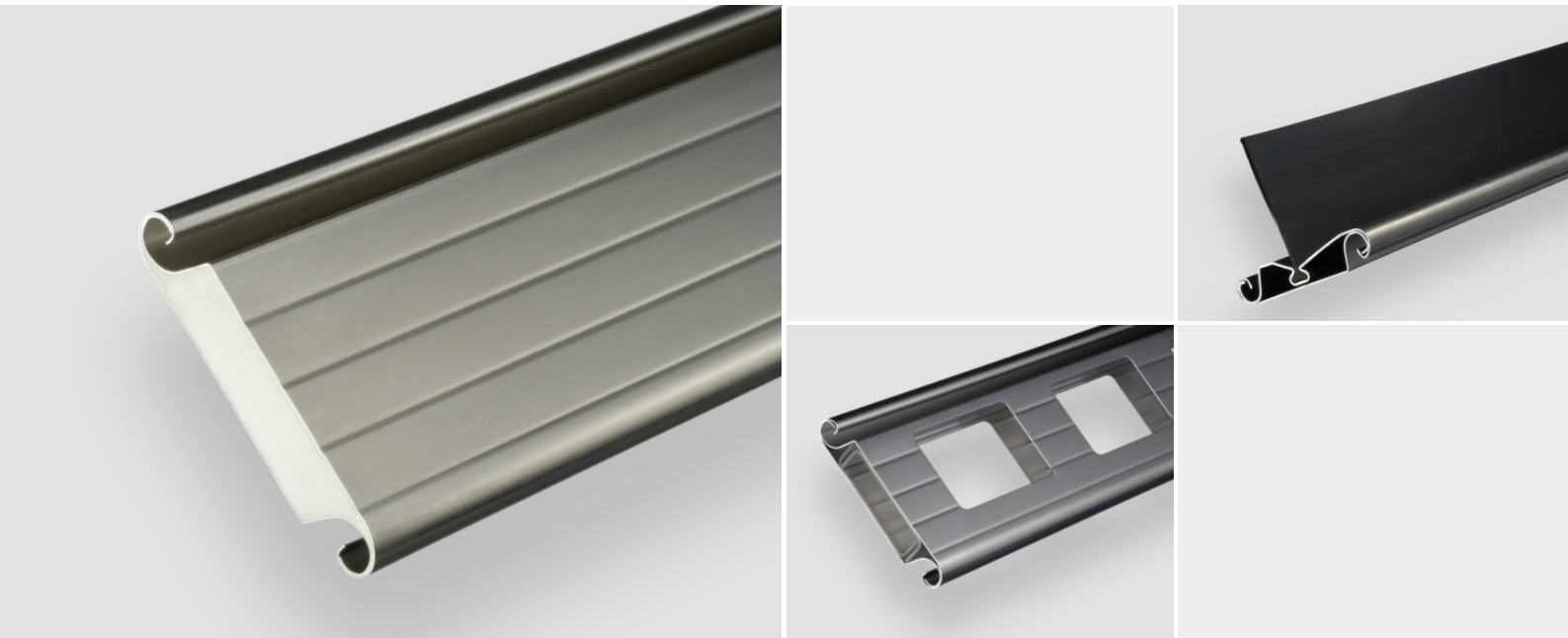
Roller door profile 1.D06

for light and
heat-insulating roller shutters.

ferdinand
braselmann.de

Vielfalt mit Profil

Roller door profile 1.D06



The roller door profile 1.D06 was developed as a variant of the proven profile 1.100 D, which is particularly striking due to its light weight and decorative beads.

It is preferred for small- to medium-sized roller shutter doors that are designed to provide a relatively low weight and good thermal insulation.

- **technical details**

insulated PU-filled profile
slats on 1 m height: 10
thickness of slats: ~ 23 mm

- **weight**

aluminium: ~ 0,68 kg/m (6,8 kg/m²)

- **maximum door width at wind class 2**

aluminium: 6.000 mm

- **material**

	0,60
aluminium, bright	•
aluminium, powder colour coated	•
aluminium, anodized 3µ	•

- **calculated bale diameter [mm]** (with top rail 1.1230)

opening height	tube diameter [mm]			
	159	178	194	219
2 m	360	370	390	400
2,5 m	380	380	390	400
3 m	420	430	450	440
3,5 m	420	430	460	450
4 m	470	480	500	450
4,5 m	470	480	500	500
5 m	490	490	500	500
6 m	520	530	540	550

(If a sealing strip is applied the bale diameter increases for at least 20-30 mm)